



# Workshop Training

## Our Benefit :



**Get Certificate**



**On Time Training**



**100 % Hands on learning**



 +91-9891179928 ( WhatsApp Only )

 allelelifesciences@gmail.com

 www.allelelifesciences.com



## OUR PEDAGOGY

Our training programs are specially designed for the betterment of students career to help them capture knowledge on emerging technologies and to improve analytical skills in different domain of science.



## WHY TRAINING ?

One of the main reasons why freshers find it difficult to get employment in the industry is the lack of hands-on experience. Our mission to get students industry-ready in their domain.

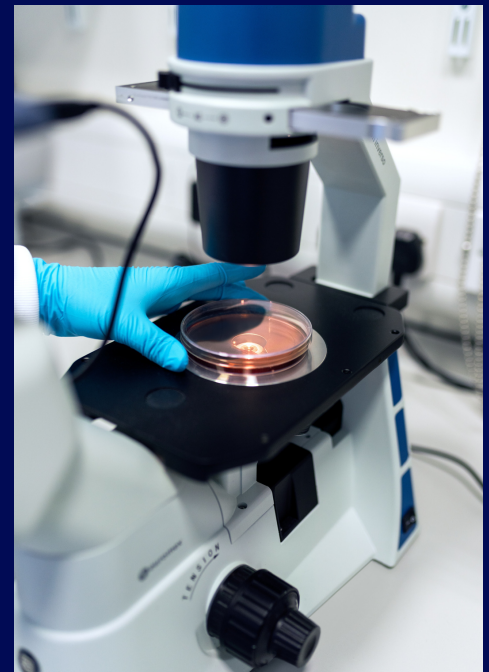
## AVAILABLE WORKSHOP

- Cancer Cell Biology
- Neuronal Cell Biology
- RNA Fluorescence In Situ Hybridization
  
- rDNA Technology
- Fingerprinting Analysis by PCR
- Molecular Diagnostic by PCR
- Real Time PCR - Gene Expression
- Methylation Analysis
  
- Protein Purification & Analysis
- Amino Acid Analysis
- Antibody Purification
  
- HPLC Workshop
- Gas Chromatography Workshop



# TRAINING WORKSHOP

## CANCER CELL BIOLOGY



### 5 DAY WORKSHOP

DAY-1

#### Cell Revival & Culture ( Instructor )

Cell Culture lab Safety, Sterilisation, Media Preparation, Passage - cryo preserved cell, Cell Culture

DAY-2

#### Cell Revival & Culture ( Self )

Cell Culture, Morphology Study of Day-1 Cell with Inverted Microscope

DAY-3

#### Cell Proliferation & Cryo Preservation

Cell Proliferation Assay and Cryo Preservation of cultured Cell

DAY-4

#### Cytotoxicity Assay

Preparation of available drug at different concentrations, MTT Assay for Cytotoxicity

DAY-5

#### Apoptosis Analysis

Apoptosis Analysis with light & Fluorescence Microscopy

#### FACILITY FOR WORKSHOP

- Inverted Microscope ( Olympus )
- Fluorescence Microscope ( Olympus )
- Both Microscope coupled with CCD Cooled Camera
- Bio Safety Cabinet
- CO2 Incubator ( Thermo Scientific )
- Facility For Cryo Preservation
- Cell Counter
- Peristaltic Pump - Media Suspension
- Microplate Reader
- Microplate Reader ( Fluorescence )
- All Plasticware & Reagents

2012

#### FEE FOR WORKSHOP

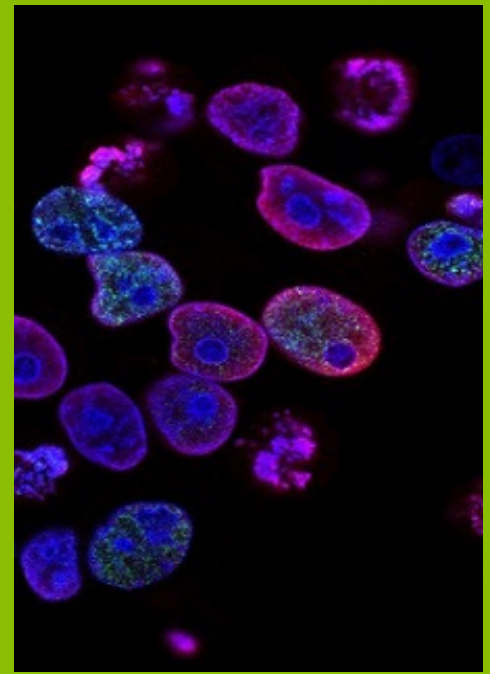
- Registration Fee - INR 500
- Total Fee - INR 5000 (Registration Fee is adjustable but not refundable )
- 10 % Discount for Group of 5

#### FEE FOR WORKSHOP

- Register before 15 days
- We will assign time slot

# NEURAL CELL BIOLOGY

## TRAINING WORKSHOP



### 5 DAY WORKSHOP

DAY-1

#### Cell Revival & Culture ( Instructor )

Cell Culture lab Safety, Sterilisation, Media Preparation, Passage - cryo preserved cell, Cell Culture

DAY-2

#### Cell Revival & Culture ( Self )

Cell Culture, Morphology Study of Day-1 Cell with Inverted Microscope

DAY-3

#### Cell Proliferation & Cryo Preservation

Cell Proliferation Assay and Cryo Preservation of cultured Cell

DAY-4

Activation of neuronal cell with lipopolysacchride & Estimation of Nitro oxide

DAY-5

Immuno Fluorescence Assay using antibody

#### FACILITY FOR WORKSHOP

- Inverted Microscope ( Olympus )
- Fluorescence Microscope ( Olympus )
- Both Microscope coupled with CCD Cooled Camera
- Bio Safety Cabinet
- CO2 Incubator ( Thermo Scientific )
- Facility For Cryo Preservation
- Cell Counter
- Peristaltic Pump - Media Suspension
- Microplate Reader
- Microplate Reader ( Fluorescence )
- All Plasticware & Reagents

2012

#### FEE FOR WORKSHOP

- Registration Fee - INR 500
- Total Fee - INR 5000 (Registration Fee is adjustable but not refundable )
- 10 % Discount for Group of 5

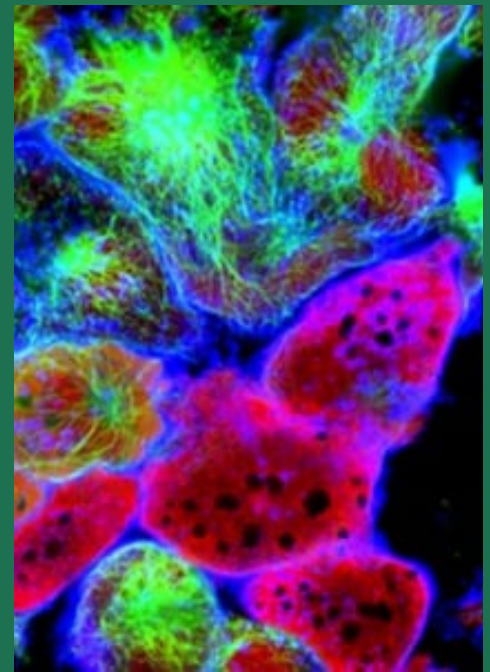
2012

#### FEE FOR WORKSHOP

- Register before 15 days
- We will assign time slot

# TRAINING WORKSHOP

## RNA FLUORESCENCE IN SITU HYBRIDIZATION



### 5 DAY WORKSHOP

DAY-1

#### Reagent Preparation required Fresh

Cell Culture on Coverslips, reagents for Fixation and Permeabilization, immuno fluorescence & RNA FISH

DAY-2

#### Preparation of Probes for RNA-FISH

Cell Culture, Morphology Study of Day-1 Cell with Inverted Microscope

DAY-3

#### Fluorescent Labeling of smFISH Probes

After Fluorescent Labeling of smFISH Probes, it will be analysed with HPLC

DAY-4

#### smFISH hybridization

Hybridization of fixed cells to nick-translated cDNA probes

DAY-5

#### Imaging & Data Analysis

#### FACILITY FOR THIS WORKSHOP

- Inverted Microscope ( Olympus )
- Fluorescence Microscope ( Olympus)
- Both Microscope coupled with CCD Cooled Camera
- Bio Safety Cabinet
- Hybridization Oven
- CO2 Incubator ( Thermo Scientific )
- Facility For Cryo Preservation
- Cell Counter
- Peristaltic Pump - Media Suspension
- Microplate Reader
- Microplate Reader ( Fluorescence )
- All Plasticware & Reagents

2012

#### FEE FOR WORKSHOP

- Registration Fee - INR 500
- Total Fee - INR 6000  
(Registration Fee is adjustable but not refundable )
- 10 % Discount for Group of 5

2012

#### FEE FOR WORKSHOP

- Register before 15 days
- We will assign time slot



# TRAINING WORKSHOP

## rDNA TECHNOLOGY



### 5 DAY WORKSHOP

#### DAY-1

##### Extraction of both DNA & Quantification

Cell Culture lab Safety, Sterilisation, Media Preparation, Passage - cryo preserved cell, Cell Culture

#### DAY-2

Primer Designing, Vectors, Selection of Restriction Sites  
Isolation of pUC18 plasmid from TOP10-pUC18 E coli cells

#### DAY-3

Restriction digestion of pUC 18 and  $\lambda$  DNA, Purifying pUC18/Hind III/ EcoR I digest by gel elution, Ligating the linearised plasmid - pUC18 and the insert - $\lambda$ DNA,

#### DAY-4

Transformation of TOP10 cells with the pUC18- $\lambda$ DNA ligated product. Colony PCR : To amplify the inserted  $\lambda$ DNA digest in pUC18 vector

#### DAY-5

Genetic Engineered Clone  
Confirmatory Assay by PCR

#### FACILITY FOR THIS WORKSHOP

- Refrigerated Centrifuge, Vortex, Dry Wath ( Thermo Scientific )
- Electrophoresis Unit with Linear Power Supply ( Biorad HV )
- DNA Concentrator
- Gel Documentation System
- Bio Safety Cabinet
- PCR Cabinet
- Thermo Cycler ( ABI & Eurofin )
- Facility For Cryo Preservation
- Microplate Reader
- All Plasticware & Reagents

2012

#### FEE FOR WORKSHOP

- Registration Fee - INR 500
- Total Fee - INR 4000  
(Registration Fee is adjustable but not refundable )
- 10 % Discount for Group of 5

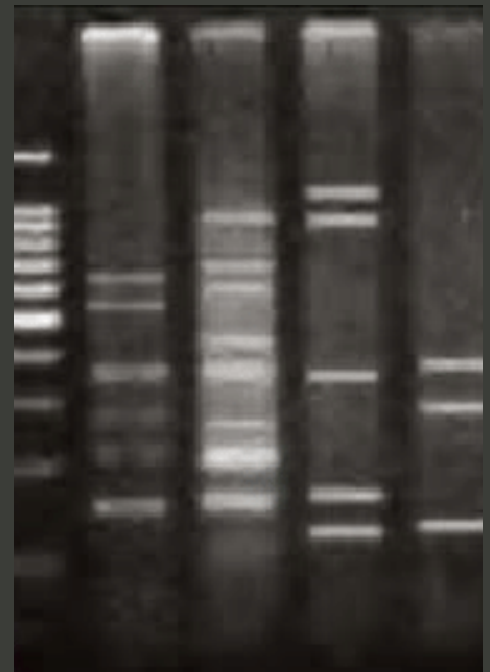
2012

#### FEE FOR WORKSHOP

- Register before 15 days
- We will assign time slot

# TRAINING WORKSHOP

## FINGERPRINTING ANALYSIS BY PCR



### 5 DAY WORKSHOP

DAY-1	High Quality DNA Extraction, Imaging With Gel Doc & Qualitative Analysis
DAY-2	Quantitative Analysis of DNA & Primer Designing
DAY-3	PCR Analysis with Molecular Marker ( RAPD )
DAY-4	PCR Analysis with Molecular Marker ( SSR ), Electrophoresis & Imaging
DAY-5	Data Analysis for Polymorphism Analysis, Similarity & Dissimilarity Analysis

#### FACILITY FOR WORKSHOP

- Refrigerated Centrifuge, Vortex, Dry Wath (Thermo Scientific )
- Electrophoresis Unit with Linear Power Supply ( Biorad HV )
- DNA Concentrator
- Gel Documentation System ( VWR )
- Bio Safety Cabinet
- PCR Cabinet
- Thermo Cycler ( ABI & Eurofin )
- Facility For Cryo Preservation
- Microplate Reader
- All Plasticware & Reagents

2012

#### FEE FOR WORKSHOP

- Registration Fee - INR 500
- Total Fee - INR 2500  
(Registration Fee is adjustable but not refundable )
- 10 % Discount for Group of 5

2012

#### FEE FOR WORKSHOP

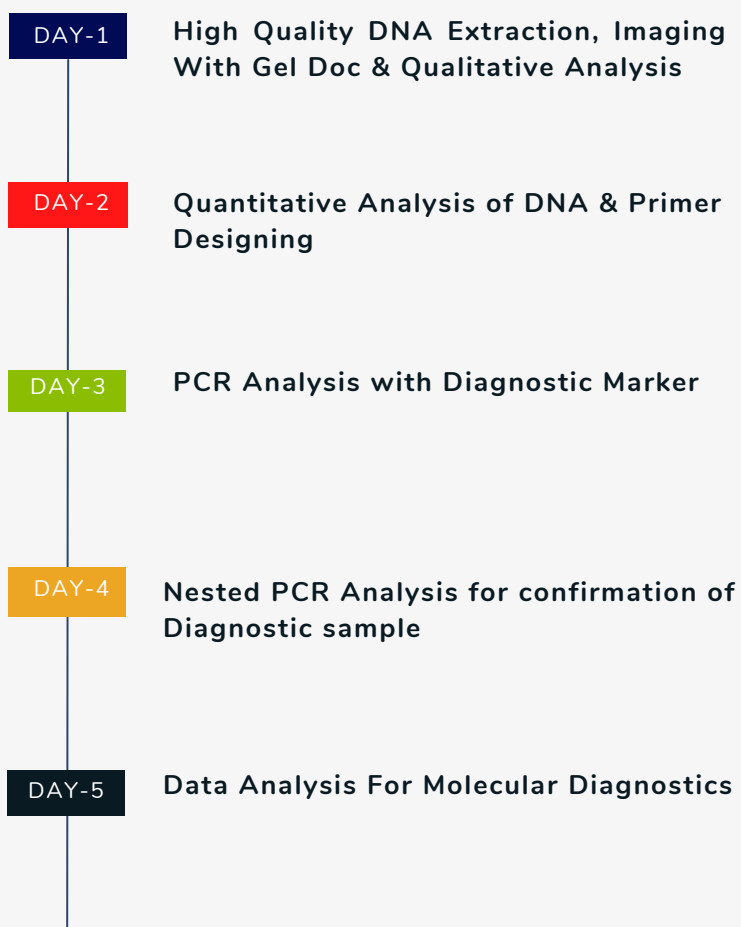
- Register before 15 days
- We will assign time slot

# MOLECULAR DIAGNOSTIC BY PCR TRAINING WORKSHOP

Professional Business Developer with more than four years of experience in the business development processes. Involved in product testing, developing.



## 5 DAY WORKSHOP



### FACILITY FOR WORKSHOP

- Refrigerated Centrifuge, Vortex, Dry Wath (Thermo Scientific )
- Electrophoresis Unit with Linear Power Supply ( Biorad HV )
- DNA Concentrator
- Gel Documentation System ( VWR )
- Bio Safety Cabinet
- PCR Cabinet
- Thermo Cycler ( ABI & Eurofin )
- Facility For Cryo Preservation
- Microplate Reader
- All Plasticware & Reagents

2012

### FEE FOR WORKSHOP

- Registration Fee - INR 500
- Total Fee - INR 2500 (Registration Fee is adjustable but not refundable )
- 10 % Discount for Group of 5

2012

### FEE FOR WORKSHOP

- Register before 15 days
- We will assign time slot

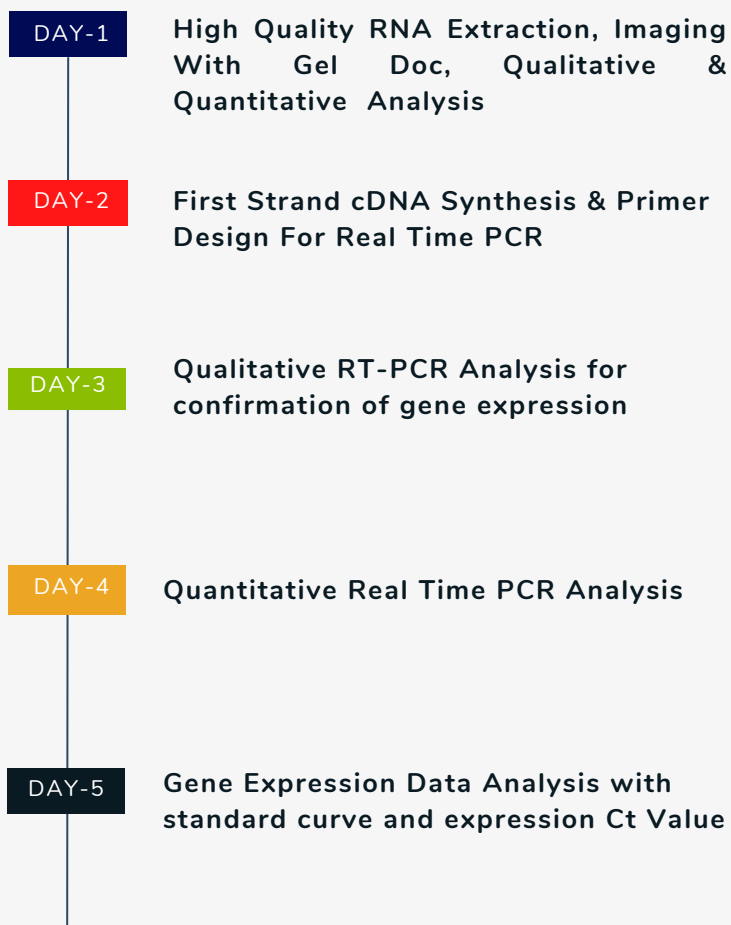


# TRAINING WORKSHOP

## REAL TIME PCR GENE EXPRESSION ANALYSIS



### 5 DAY WORKSHOP



#### FACILITY FOR THIS WORKSHOP

- Real Time PCR ( ABI )
- Thermo Cycler ( ABI & Eurofin )
- Refrigerated Centrifuge, Vortex, Dry Wath (Thermo Scientific )
- Electrophoresis Unit with Linear Power Supply ( Biorad HV )
- DNA Concentrator
- Gel Documentation System ( VWR )
- Bio Safety Cabinet
- PCR Cabinet
- Facility For Cryo Preservation
- Microplate Reader
- All Plasticware & Reagents

2012

#### FEE FOR WORKSHOP

- Registration Fee - INR 500
- Total Fee - INR 4500 (Registration Fee is adjustable but not refundable )
- 10 % Discount for Group of 5

2012

#### FEE FOR WORKSHOP

- Register before 15 days
- We will assign time slot

# METHYLATION ANALYSIS TRAINING WORKSHOP

Professional Business Developer with more than four years of experience in the business development processes. Involved in product testing, developing.



## 5 DAY WORKSHOP

DAY-1

High Quality RNA Extraction, Imaging With Gel Doc, Qualitative & Quantitative Analysis

DAY-2

Sulfide Modification - DNA undergoes bisulfite conversion of cytosine to uracil

DAY-3

Bisulfite conversion PCR primer design, PCR amplification and optimization

DAY-4

Bisulfide Modification and Methylation HPLC Analysis- detect the level of 5mC (5-methylcytosine) on DNA molecules / PCR Products

DAY-5

Methylation Analysis by ELISA -

### FACILITY FOR THIS WORKSHOP

- HPLC System ( Agilent )
- Thermo Cycler ( ABI & Eurofin )
- Microplate Reader
- Refrigerated Centrifuge, Vortex, Dry Wath (Thermo Scientific )
- Electrophoresis Unit with Linear Power Supply ( Biorad HV )
- DNA Concentrator
- Gel Documentation System ( VWR )
- Bio Safety Cabinet
- PCR Cabinet
- Facility For Cryo Preservation
- Microplate Reader
- All Plasticware & Reagents

### FEE FOR WORKSHOP

- Registration Fee - INR 500
- Total Fee - INR 4000 (Registration Fee is adjustable but not refundable )
- 10 % Discount for Group of 5

### FEE FOR WORKSHOP

- Register before 15 days
- We will assign time slot

# PROTEIN PURIFICATION & ANALYSIS TRAINING WORKSHOP

Professional Business Developer with more than four years of experience in the business development processes. Involved in product testing, developing.



## 5 DAY WORKSHOP

DAY-1

**Protein Extraction & Protein Estimation**  
by Bradford / Lawry's Assay

DAY-2

**Buffer & Reagent Preparation For Protein Purification-** Acid Base Equilibrium, pH, Buffer System, Charge, pI and pKa Value & Ammonium Precipitation

DAY-3

**Dialysis for desalting protein & CM Sephrose Size Exclusion Chromatography**

DAY-4

**DEAE Sepharose Ion Exchange Protein Purification-** Column selection, Partition coefficient, Mobile phase selection, Gradients, Effect of flow rate etc

DAY-5

**Molecular Weight Analysis of the protein with SDS-PAGE**

### FACILITY FOR WORKSHOP

- Biorad FPLC System
- Cytiva Protein Purification Column
- Peristaltic Pumps
- HPLC System
- Preparative HPLC System
- Iso Electric Focusing ( GE Amersham )
- Vertical Electrophoresis
- Western Blot System
- Refrigerated Centrifuge ( All Rotors )
- Microplate Reader
- Microplate Reader ( Fluorescence )
- All Plasticware & Reagents

2012

### FEE FOR WORKSHOP

- Registration Fee - INR 500
- Total Fee - INR 4500  
(Registration Fee is adjustable but not refundable )
- 10 % Discount for Group of 5

2012

### FEE FOR WORKSHOP

- Register before 15 days
- We will assign time slot

# TRAINING WORKSHOP ANTIBODY PURIFICATION & ANALYSIS



## 5 DAY WORKSHOP

DAY-1

Extraction of IgY antibodies & Protein Estimation by Bradford / Lawry's Assay Specimen - Chicken Egg

DAY-2

Affinity Protein Purification- Buffer & Reagent Preparation For affinity chromatograph.

DAY-3

Ammonium Precipitation & Dialysis for desalting protein

DAY-4

Affinity Purification- Column selection, Partition coefficient, Mobile phase selection, Gradients, Effect of flow rate etc

DAY-5

Analysis of the protein with SDS-PAGE & Western Blot For antibody

### FACILITY FOR WORKSHOP

- Biorad FPLC System
- Cytiva Protein Purification Column
- Peristaltic Pumps
- HPLC System
- Preparative HPLC System
- Iso Electric Focusing ( GE Amersham )
- Vertical Electrophoresis
- Western Blot System
- Refrigerated Centrifuge ( All Rotors )
- Microplate Reader
- Microplate Reader ( Fluorescence )
- All Plasticware & Reagents

2012

### FEE FOR WORKSHOP

- Registration Fee - INR 500
- Total Fee - INR 4500  
(Registration Fee is adjustable but not refundable )
- 10 % Discount for Group of 5

2012

### FEE FOR WORKSHOP

- Register before 15 days
- We will assign time slot

# TRAINING WORKSHOP AMINO ACID ANALYSIS



## 5 DAY WORKSHOP

### DAY-1

#### Sample Preparation For Amino Acid Analysis

Partitioning scheme of the extract between various solvents to remove the unwanted compounds, such as: polysaccharides, lipids, phenols and others.

### DAY-2

#### Hydrolysis and Derivatisation of Amino Acid

Liquid Phase Hydrolysis, Vapour Phase Hydrolysis, Pre Column Derivatisation, Post Column Derivatisation

### DAY-3

#### Separation of Amino Acids with HPLC

Separation of derivatised amino acids, Separation of non derivatised amino acids, Separation of Amino Acid by Chromatography

### DAY-4

#### Determination of amino acid after hydrolysis, Determination of amino acid before hydrolysis

### DAY-5

#### Reverse Phase Amino Acid Chromatography

### FACILITY FOR WORKSHOP

- HPLC System ( Agilent )
- Biorad FPLC System
- Cytiva Protein Purification Column
- Peristaltic Pumps
- Preparative HPLC System ( Thermo )
- Spectrophotometer ( Thermo )
- Microplate Reader ( Thermo )
- Microplate Reader ( Fluorescence )
- Refrigerated Centrifuge ( All Rotors )
- Sonication Machine
- Medical Gases - Nitrogen & Oxygen
- All Plasticware & Reagents

2012

### FEE FOR WORKSHOP

- Registration Fee - INR 500
- Total Fee - INR 5000  
(Registration Fee is adjustable but not refundable )
- 10 % Discount for Group of 5

2012

### FEE FOR WORKSHOP

- Register before 15 days
- We will assign time slot



# TRAINING WORKSHOP

## HPLC ANALYSIS



## 5 DAY WORKSHOP

### DAY-1

#### Basics of HPLC

HPLC instrument in detail – including the solvent delivery system, sample injection, connecting tubing and fittings, commonly used detectors

### DAY-2

#### HPLC System Suitability Check

Resolution, Efficiency, Asymmetry, Capacity factor, Selectivity, Signal to noise ratio, Precision and accuracy, System suitability limits and manual calculation of parameters

### DAY-3

#### HPLC Sample & Standard Preparation

Mobile Phase Selection & Preparation, Preparation of Standard Solution

### DAY-4

#### Sample Run with HPLC

Sample will be run with accuracy, reproducibility & precision

### DAY-5

#### Data Analysis

Data Analysis for exact quantification of compound in the sample with linearity, LOD & LOQ analysis.

#### FACILITY FOR WORKSHOP

- HPLC System ( Agilent )
- Preparative HPLC System ( Thermo )
- HPLC System - FLD Detector
- Peristaltic Pumps
- Spectrophotometer ( Thermo )
- Microplate Reader ( Thermo )
- Microplate Reader ( Fluorescence )
- Refrigerated Centrifuge ( All Rotors )
- Sonication Machine
- Various Columns
- Medical Gases - Nitrogen & Oxygen
- All Plasticware & Reagents

2012

#### FEE FOR WORKSHOP

- Registration Fee - INR 500
- Total Fee - INR 5000  
(Registration Fee is adjustable but not refundable )
- 10 % Discount for Group of 5

2012

#### FEE FOR WORKSHOP

- Register before 15 days
- We will assign time slot

# TRAINING WORKSHOP ANALYSIS BY GAS CHROMATOGRAPHY



## 5 DAY WORKSHOP

### DAY-1

#### Basics of GC

GC instrument in detail – including the mobile phase, system suitability, sample injection, connecting tubing and fittings, commonly used detectors

### DAY-2

#### GC System Suitability Check

Resolution, Efficiency, Asymmetry, Capacity factor, Selectivity, Signal to noise ratio, Precision and accuracy, System suitability limits and manual calculation of parameters

### DAY-3

#### GC Sample & Standard Preparation

Mobile Phase Selection & Preparation, Preparation of Standard Solution

### DAY-4

#### Sample Run with GC

Sample will be run with accuracy, reproducibility & precision

### DAY-5

#### Data Analysis

Data Analysis for exact quantification of compound in the sample with linearity, LOD & LOQ analysis.

#### FACILITY FOR WORKSHOP

- Gas Chromatography System
- HPLC System ( Agilent )
- Preparative HPLC System ( Thermo )
- HPLC System - FLD Detector
- Peristaltic Pumps
- Spectrophotometer ( Thermo )
- Microplate Reader ( Thermo )
- Microplate Reader ( Fluorescence )
- Refrigerated Centrifuge ( All Rotors )
- Sonication Machine
- Various Columns
- Medical Gases - Nitrogen & Oxygen
- All Plasticware & Reagents

2012

#### FEE FOR WORKSHOP

- Registration Fee - INR 500
- Total Fee - INR 5000  
(Registration Fee is adjustable but not refundable )
- 10 % Discount for Group of 5

2012

#### FEE FOR WORKSHOP

- Register before 15 days
- We will assign time slot

## Address Office:

A : C-59, Sector-10, Industrial Area, Noida, Uttar Pradesh, India - 201301

P : +91-9891179928

E : [info@allelelifesciences.com](mailto:info@allelelifesciences.com)



## PERSONAL INFORMATION

Full Name :

Address :

Nationality :  Institution ( If Any )

Phone :  Email :

Name of Training :

## Terms & Conditions

1. The admission to training / internship programs will be confirmed after the payment of registration fee along with documents.
2. The registration fee Rs 500/- deposited is completely non refundable.
3. I will deposit the service charges as decided by the company in brochure at the time of joining date of training program.
4. Students have to bear their own boarding/lodging /conveyance charges.
5. Trainees will maintain adequate discipline & lab safety inside the lab premises.
6. Company will not be responsible for any medical, legal issues during the internship tenure.

## Declaration

I  hereby declare that all statement/information given in the application form are true to the best of my knowledge and belief . I will strictly abide by the terms & conditions, norms, lab etiquette during the training .

Pay Registration Fee for confirmation of seat for training program.  
Send the copy of the form, payment detail and any identity proof at :  
[info@allelelifesciences.com](mailto:info@allelelifesciences.com)



[allelelifesciences@upi](mailto:allelelifesciences@upi)

## THANK YOU FOR REGISTRATION

We will send your training confirmation letter at your Email ID given in the registration form

Trainee Signature

## More Information :

If you do not receive confirmation letter kindly WhatsApp your details at:  
9891179928

[www.allelelifesciences.com](http://www.allelelifesciences.com)



## CONTACT US —

### ALLELE LIFE SCIENCES PVT. LTD

C-59, Sector-10, Industrial Area, Noida, Uttar Pradesh, India - 201301

WhatsApp: 9891179928

Email: [info@allelelifesciences.com](mailto:info@allelelifesciences.com)

Web: [www.allelelifesciences.com](http://www.allelelifesciences.com)

## OUR SERVICES

### GENOMICS SERVICES

- Sequencing Services
- PCR & Real Time PCR Services
- Gene Cloning
- Genotyping Services
- Epigenetic Analysis
- Microbiome Analysis
- Nutrigenomics Analysis
- Plant Genomics

### PROTEIN CHEMISTRY

- Protein Purification
- Protein Analysis
- Peptide Synthesis
- Peptide Modification
- Peptide Labelling
- Antibody Purification
- Enzyme Production
- Enzyme Analysis

### BIOLOGICAL ASSAY

- In-Vitro Cell Assay
- Microbial Assay
- Antioxidant Assay
- Oxidative Stress Assay
- Toxicity Assay
- Nanotechnology Assay
- Bio-Chemical Assay
- Immunology Assay

### ANALYTICAL SERVICES

- HPLC Analysis
- GC Analysis
- Mass Spectrometry Analysis
- Vitamin Analysis
- GMO Analysis
- Amino Acid Analysis
- Allergen Analysis
- Trace Analysis

## OUR PRODUCTS

- Molecular Biology Reagents
- Biochemical Analysis
- Protein Analysis Reagents
- Cell Culture Products
- Plant Research Products
- Lab Equipment